



Rauher Stafel (Marlin 2015)

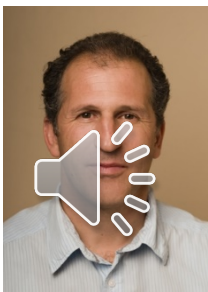
Inventory: white zones Vorarlberg

Original, natural and less developed
landscape areas

AlpPlan network - Online Meeting

DI Manfred Kopf
Regional Spatial Planning

Bregenz, 29. October 2020





Starting position and order

- **High pressure of landscape use in the alpine region: cable car projects, road constructions**
- **Criticism from nature conservation organisations**
- **We got an order from the government in the year 2012**
- **Goal: To get an inventory of the traditional, natural and less developed landscape areas**





Methods and results

Landscape chambers:

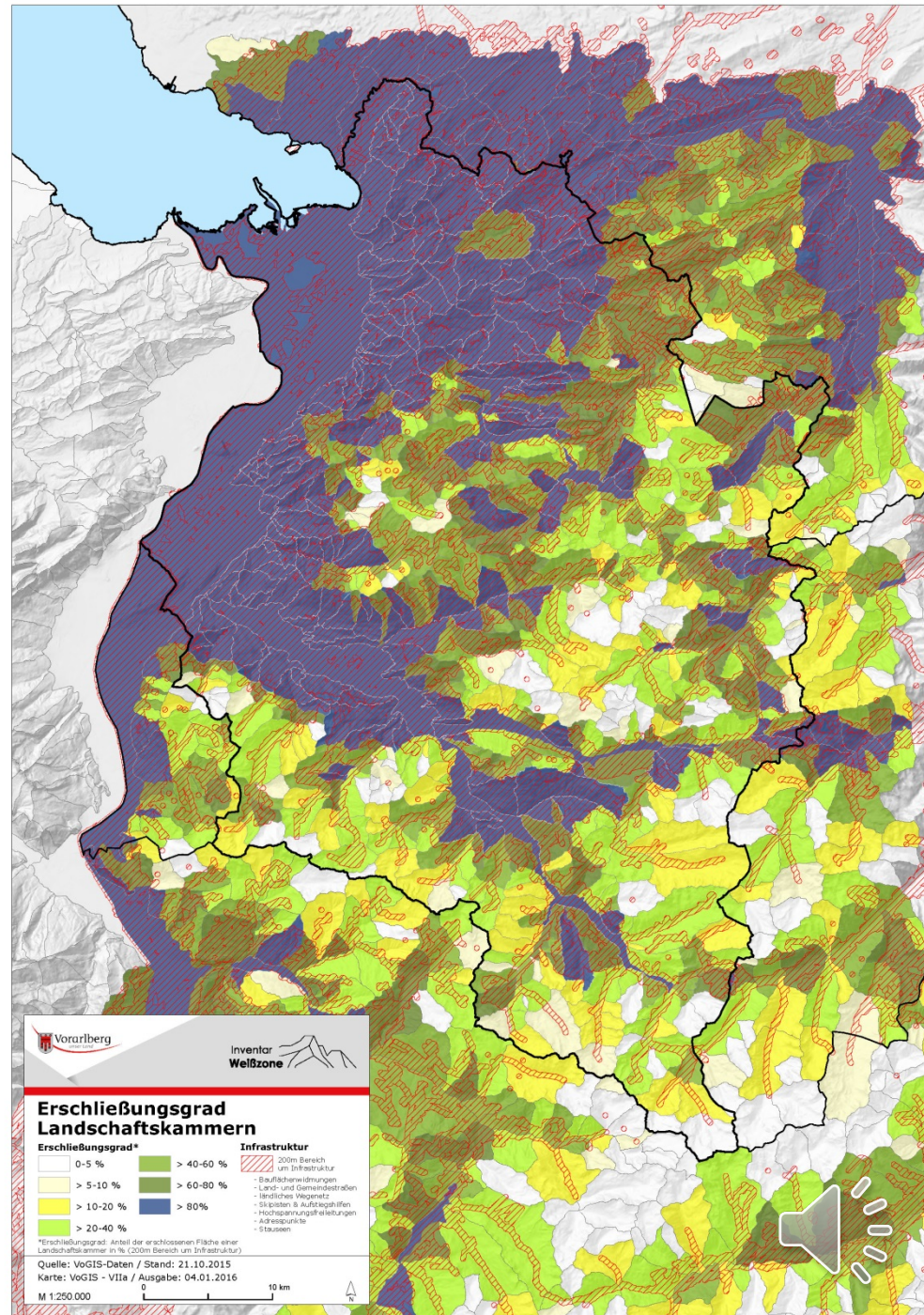
We have defined landscape chambers according to catchment areas of rivers.

Degree of development:

Percentage of developed areas in the total area of a landscape chamber.



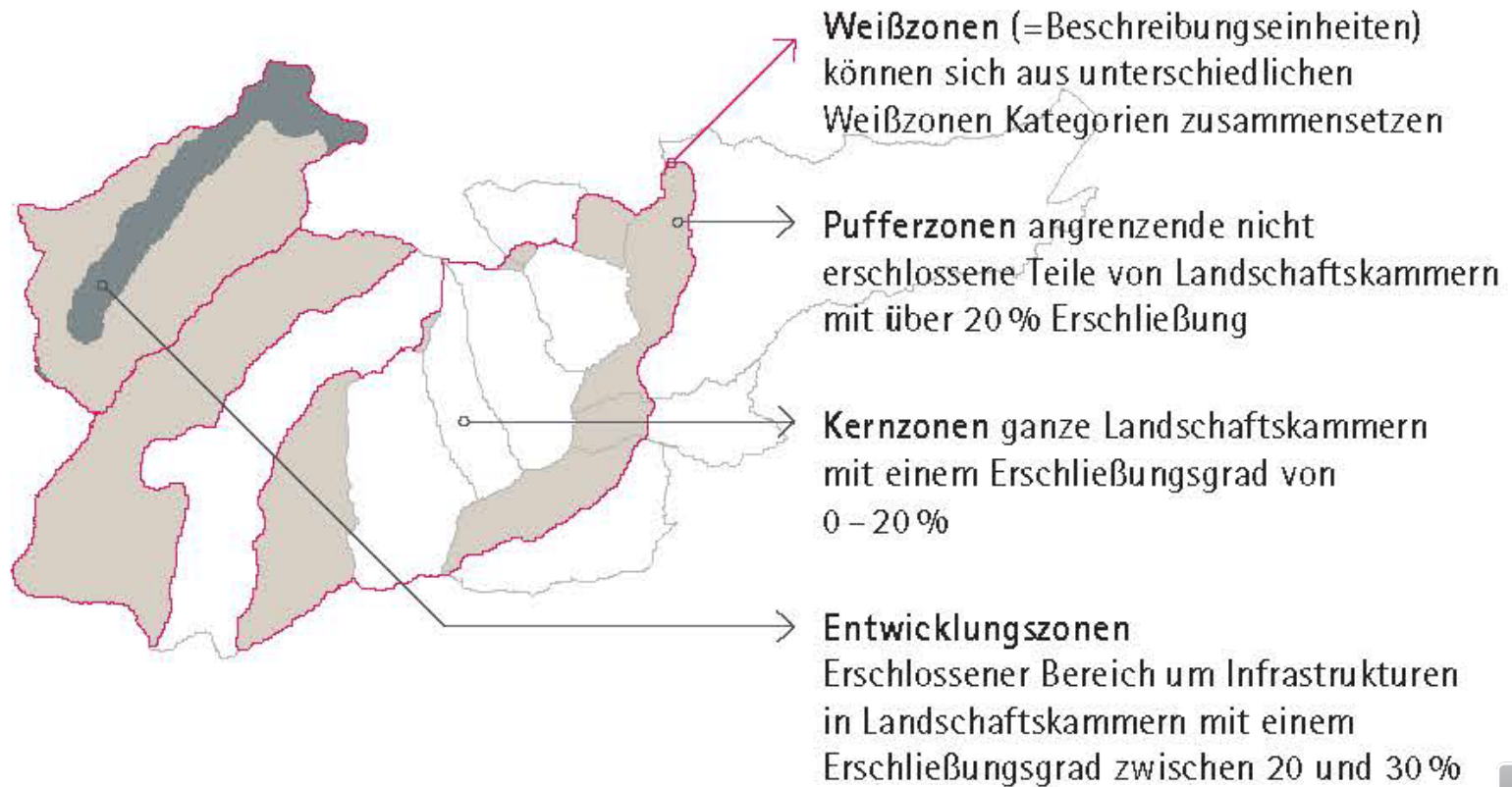
Landscape chamber in the area of Montafon





Methods and results




Categories: core zones, buffer zones and development zones





Methods and results

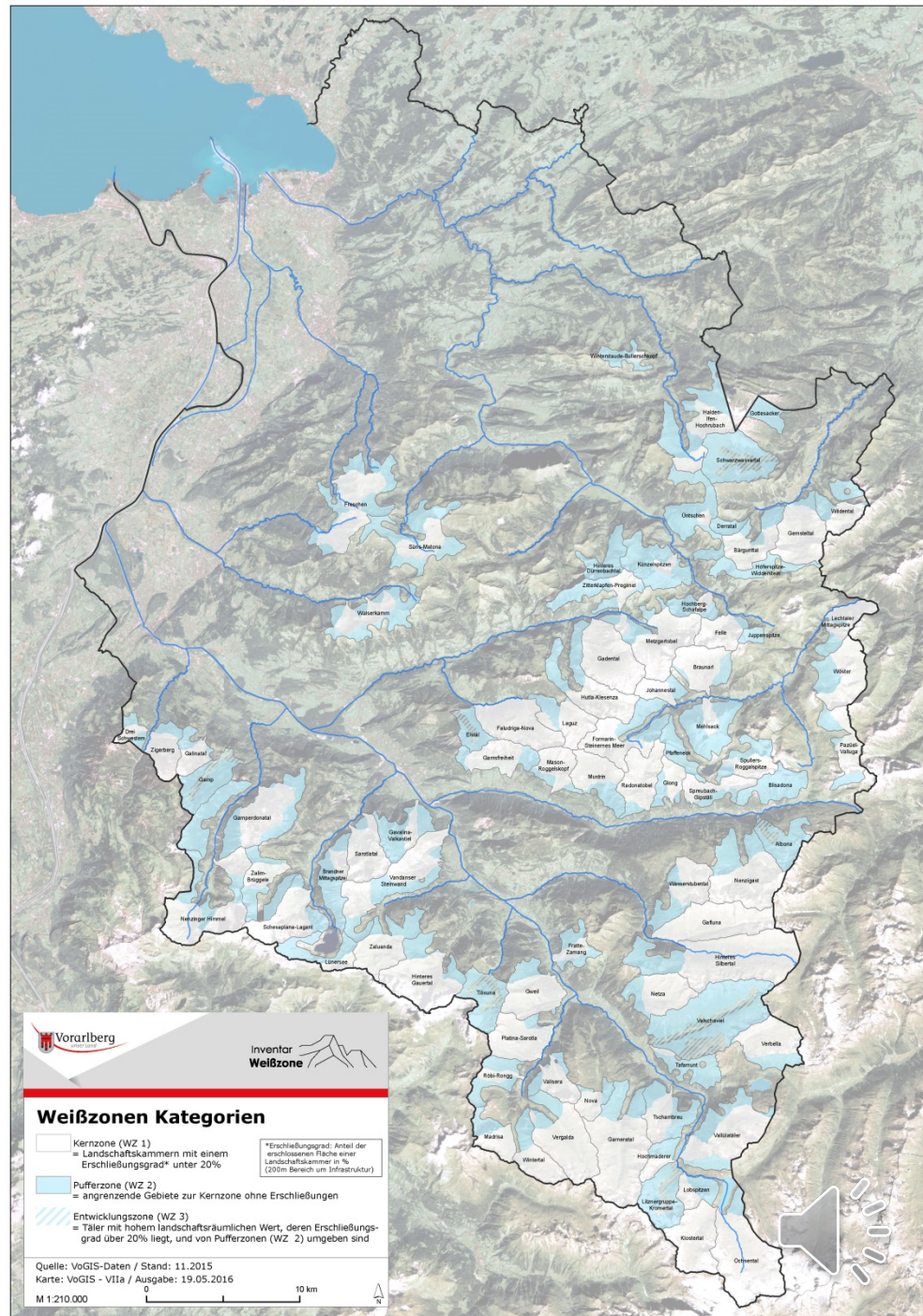
Categories: core zone and buffer zone

-  **Kernzone**
= Landschaftskammern mit einem Erschließungsgrad* unter 20%
-  **Pufferzone**
= angrenzende Gebiete zur Kernzone ohne Erschließungen
-  **Entwicklungszone**
= Täler mit hohem landschaftsräumlichen Wert, deren Erschließungsgrad über 20% liegt, und von Pufferzonen umgeben sind

Results:

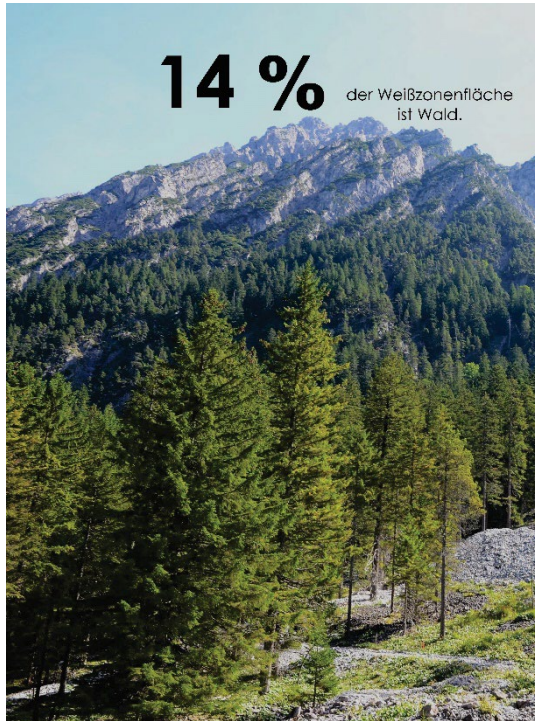
A third of the country's area are documented as white zones

→ which means 83 areas of Vorarlberg





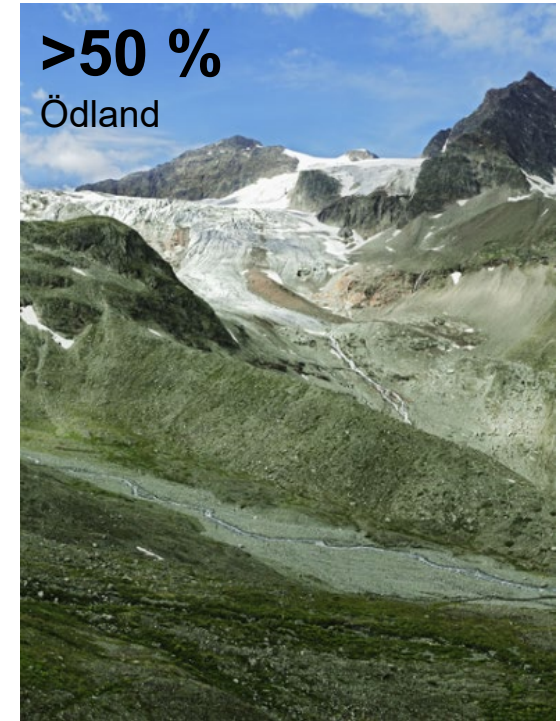
Methods and results



Forest



**Agricultural
land (Alps)**

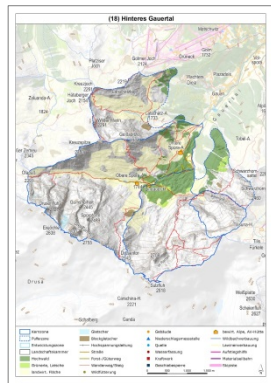
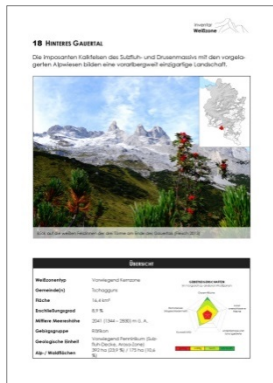


**Uncultivated
land**

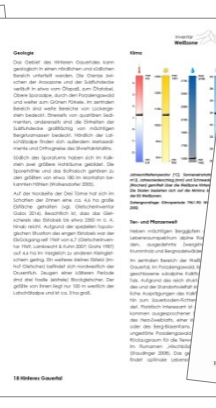




Inventory: 83 descriptions in 38 municipalities



- ✓ Overview sheets with key data
- ✓ Territory map
- ✓ Area description
- ✓ Landuse description
- ✓ Special particularities





Goal

- **Preservation of traditional, natural and less-developed alpine landscape areas to compensate for the developed and intensively used areas in Vorarlberg.**
- **Prevention of new, large infrastructure changing the landscape in selected areas.**

Principles

- **The continuation and further development of sustainable agriculture, forestry and hunting use should be possible to continue in these areas.**
- **The accessibility in those landscape areas should be protected for people (e.g. hiking, skiing tours). No exclusion area for people.**





Effect

It is a very good basis for spatial planning without a regulated law in the alpine area.





Formarinsee (UMG 2013)

THANK YOU FOR YOUR ATTENTION.

